

## NOVAX TP-MSR 40

Suitable for use with Novax Leda and

Novax 2020 taximeters.

Direct thermal printer technology means fast printing and fewer moving parts enhancing reliability and life expectancy.

A typical receipt takes less than 1 second to print. A duplicate payment card receipt takes 2 seconds. Fare schedule details and running total details including shift summaries and even data log details can all be printed.

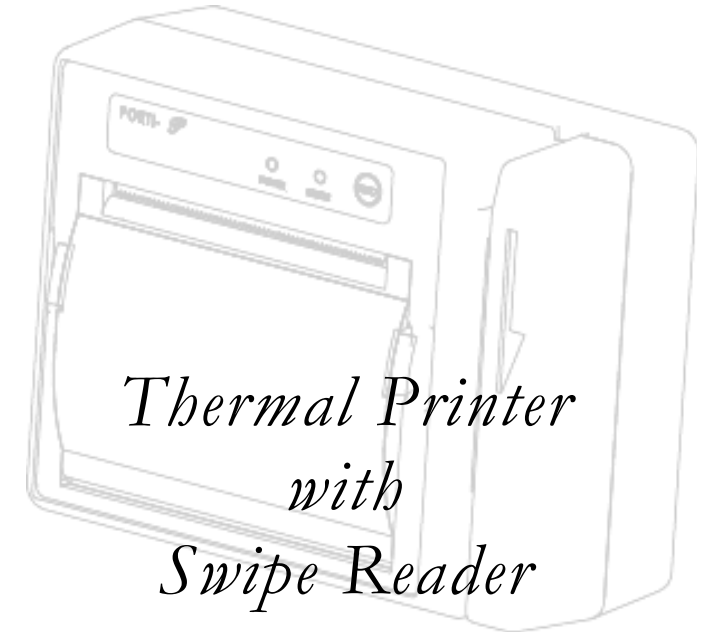


NOVAX Electronic Products  
*Scottronic Sales and Service Ltd.*

P.O. Box 495  
Kerikeri,  
Bay of Islands,  
New Zealand 0470.

Phone: (64) 9 407-5581  
Fax: (64) 9 407-5582  
Email: sales@scottronic.com  
Web site: www.scottronic.com

NOVAX Electronic Products  
*Scottronic Sales and Service Ltd.*



### General features:

- ▶ Size: 105 x 80.4 x 45.7mm
- ▶ Weight: 239.5g.
- ▶ Direct thermal printing.
- ▶ High speed(50mm/sec)
- ▶ High resolution(203dpi : 8dots/mm).
- ▶ Magnetic Stripe Reader included.
- ▶ Easier paper loading by CLAMSHELL design.
- ▶ Support text and graphic printing.
- ▶ Serial(RS-232C) interface
- ▶ DC 12-24V Standby 60~30mA and Max 3.2~1.6A.

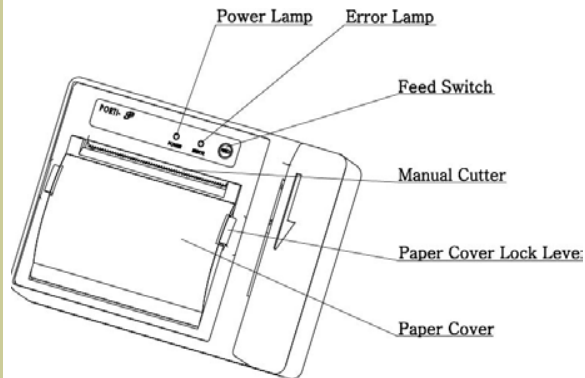


*World Leaders in Taximeters*



## Installing or replacing the paper roll

1. Make sure that the printer is not receiving data; otherwise, data may be lost.
2. Open the paper roll cover by applying finger pressure to the locks on both side of the cover, push it up when the locks release as shown in the drawing.



### FEED Button :

Press the **FEED** button once to advance paper one line.  
Hold the **FEED** button to feed paper continuously.

### POWER Lamp:

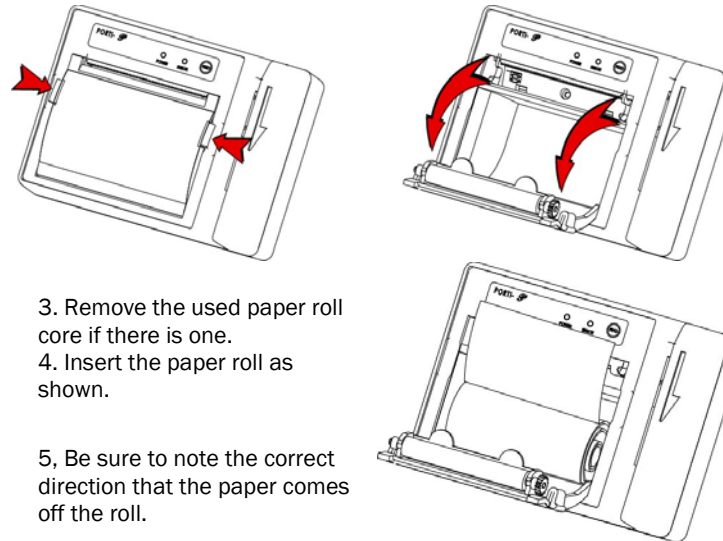
Indicates the printer is on.

### ERROR Lamp:

Indicates an error such as paper end, or cover open, etc.

### Self-test;

1. Make sure paper roll has been installed properly.
2. Turn on the power while holding down the **FEED** button. The self-test begins.
3. The self-test prints the current printer status, which provides the control ROM version and the communication method setting.
4. After printing the current printer status, self-test printing will print a pattern using the built-in character set.
5. The self-test automatically ends.

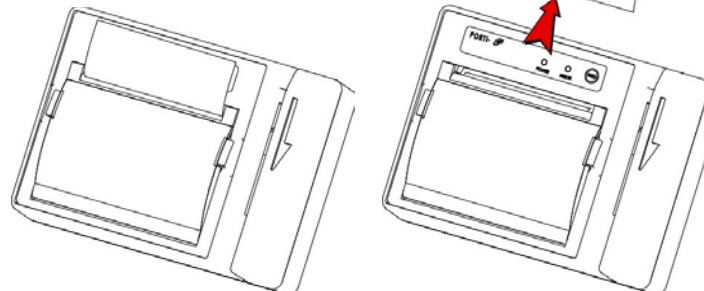


3. Remove the used paper roll core if there is one.
4. Insert the paper roll as shown.

5. Be sure to note the correct direction that the paper comes off the roll.



6. Pull out a small amount of paper and then close the cover. Tear off the surplus paper



### Recommended paper

Type:	Thermal Paper
Paper width:	57mm
Paper thickness:	65±5 Mm
Outer diameter:	Ø40mm or less
Recording side:	Outside of roll

### Cautions

- 1) Do not paste the paper to the core. Paper which has 'near-end' mark printing is recommended.
- 2) Chemicals or oil may change the color of paper, or printed Characters may fade.
- 3) Change of paper color starts from approx 70 C. Pay attention to heat, humidity and sun light.
- 4) Color of paper may be changed by scratching with finger nail etc

### Printer mechanism handling

- 1) Do not pull the paper out when the cover is closed. Use the 'Feed' button where necessary
- 2) The thermal elements of the print head and driver ICs are fragile, do not touch them with any metal objects.
- 3) Since the areas around the print head become very hot during and just after printing, do not touch them.
- 4) Open the printer cover ONLY when necessary.
- 5) Dust and dirt can damage the print elements, avoid finger contact.
- 6) Thermal paper containing Na, K, Cl ions can harm the print head thermal elements. Therefore, be sure to use only the specified paper.

**NOVOX** Electronic Products  
Scottronic Sales and Service Ltd.

P.O. Box 495  
Kerikeri,  
Bay of Islands,  
New Zealand 0470.

Phone: (64) 9 407-5581  
Fax: (64) 9 407-5582  
Email: sales@scottronic.com  
Web site: www.scottronic.com